

DIMAPUR AIRPORT

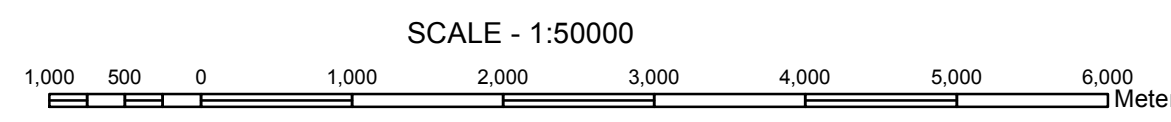
LATITUDE 25° 53' 00.4472" N
 LONGITUDE 093° 46' 16.8870" E
 ARP ELEV. 143.623m (471 ft)
 RWY 12/30 2292m x 45m
 AERODROME ELEV. 148.4 m (487 ft.)

LIST OF NAV AIDS

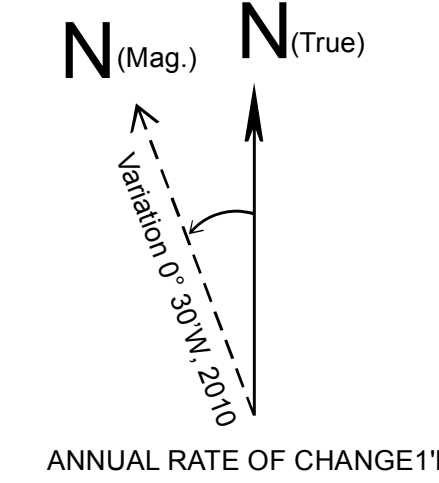
NDB 25° 53' 02.1" N 093° 46' 03.7" E
 LLZ12 25° 52' 42.5" N 093° 46' 58.5" E
 GP/ILS 25° 53' 08.6" N 093° 45' 55.2" E
 DVOR/DME 25° 52' 51.0" N 093° 46' 53.7" E

Legend

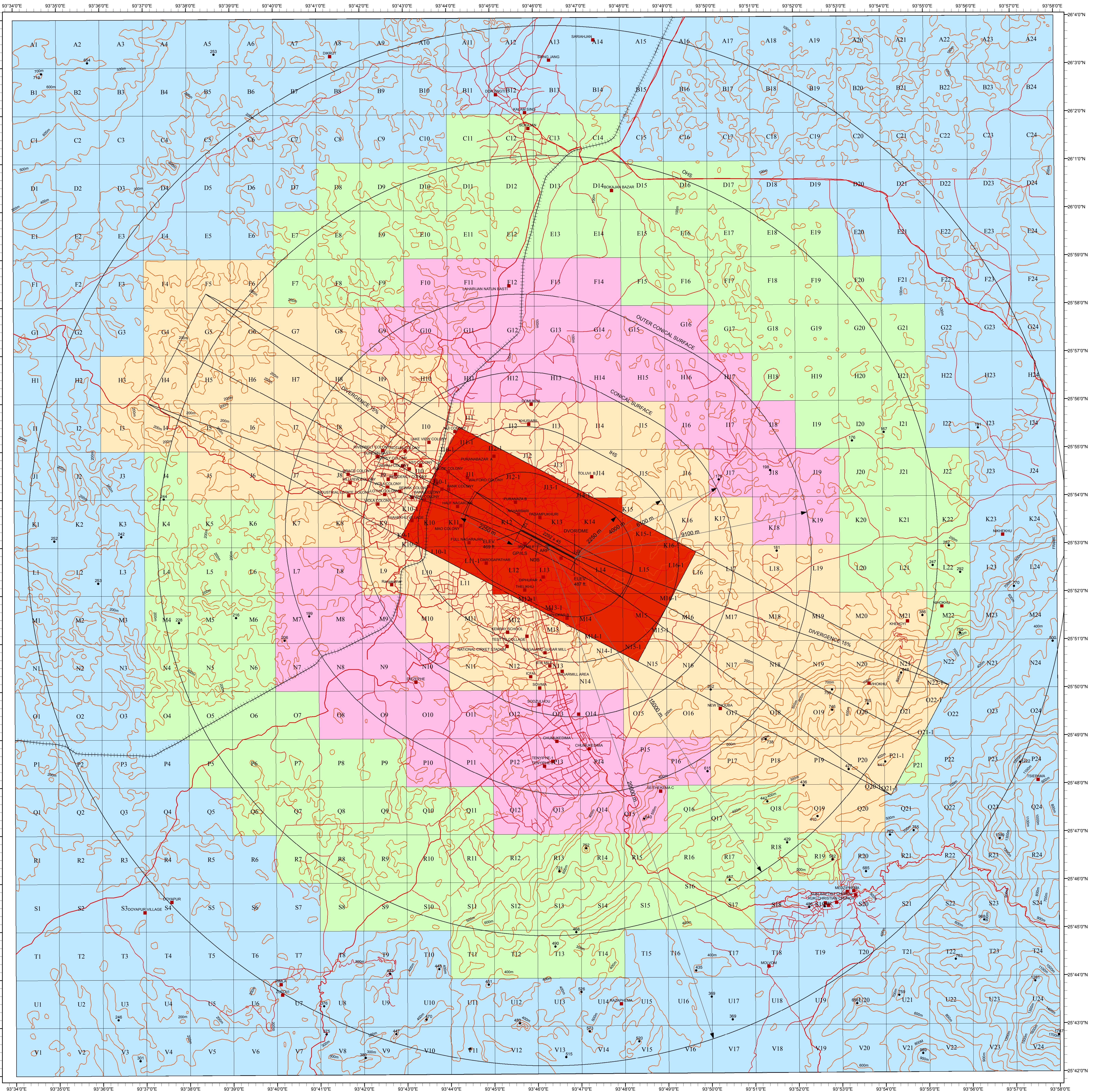
- VILLAGE
- ROAD_2
- ROAD
- RIVER
- RAILWAY_LINE
- POWER_LINE
- WATERBODY



- GEOGRAPHICAL CO-ORDINATES ARE IN WGS - 84 SYSTEM.
- ALL ELEVATIONS, CONTOURS AND DIMENSIONS ARE IN METRES.



CCZM OF DIMAPUR AIRPORT



COLOUR LEGEND

- 0 NOC TO BE OBTAINED FROM AAI
- 185 PERMISSIBLE TOP ELEV. 185 m AMSL OR BELOW
- 205 PERMISSIBLE TOP ELEV. 205 m AMSL OR BELOW
- 225 PERMISSIBLE TOP ELEV. 225 m AMSL OR BELOW
- 245 PERMISSIBLE TOP ELEV. 245 m AMSL OR BELOW

NOTE:

- THIS CCZM HAS BEEN PREPARED IN ACCORDANCE WITH GSR 751(E) RULE 5 SUBRULE 1 IN RESPECT OF OBSTACLE LIMITING SURFACES OF DIMAPUR AIRPORT AND DOES NOT INCLUDE JURISDICTION OF DEFENCE AIRPORT. LOCAL AUTHORITIES MAY REFER TO DEFENCE AUTHORITIES IN CASE OF ANY SITE FALLS WITHIN JURISDICTION OF DEFENCE AIRPORTS.
- NOC IS NOT REQUIRED FROM AAI FOR BUILDING/STRUCTURES PROPOSED TO BE CONSTRUCTED UPTO THE HEIGHT PERMITTED VIDE THIS CCZM, REFER G751(E) RULE 7(2) (3) & (4).
- THE HEIGHT PERMITTED BY CCZM ARE INDICATED ABOVE MEAN SEA LEVEL I.E. AMSL. BUILDING HEIGHT PERMITTED I.E. ABOVE GROUND LEVEL (AGL) WILL BE CALCULATED CCZM HEIGHT (-) THE SITE ELEVATION OF THE PLOT = CCZM HEIGHT - SITE ELEVATION
- THIS CCZM IS PREPARED IN INCORPORATING APPROVED MASTERPLAN OF DIMAPUR AIRPORT.
- FEED BACK ON CCZM SOLICITED FROM AIRPORT, CONCERNED NOC CELL, AERODROME OPERATER AND LOCAL AUTHORITIES.

APPLICABLE FROM DATE : 07/09/2017

(SUBJECT TO REVIEW WHEN REQUIRED)

VERSION NO... 1.0	DATE...04-09-2017
PREPARED BY (SR. SUPDT.)	(SHISH PAL/RAJEEV SHARMA)
CHECKED BY (AGM. CARTO)	(LAJPAT RAI)
RECOMMENDED BY JT.GM(NOC)	(SATYAJIT DUTTA)
APPROVED BY GM(NOC)	(RAJEEV MEHTA)